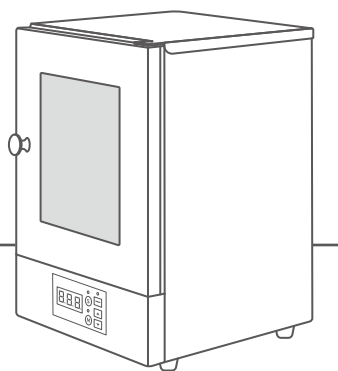


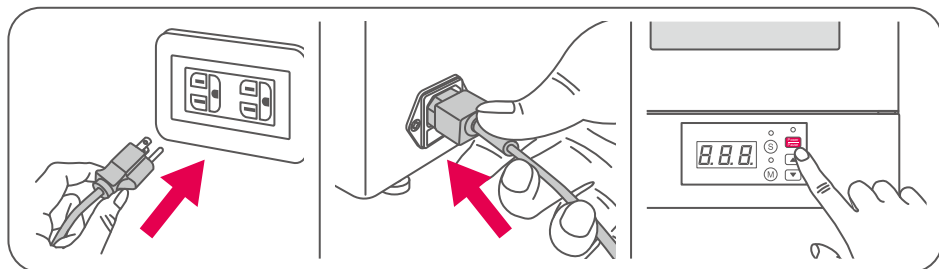


UV Curing Lamp User Guide

Phrozen Cure User Guide



01 Power Supply & Light Switch



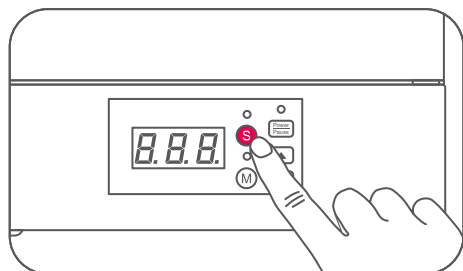
Turn on the device

Connect the power cable. Press the Power button to turn on the device.

Turn off the device

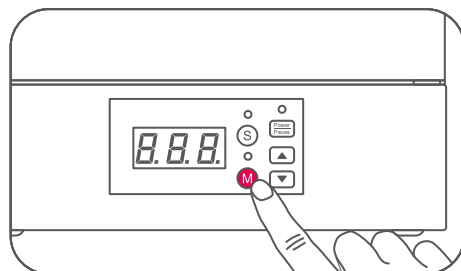
Long press the Power button. The curing lamp will turn off after a beep sound.

02 To Set Curing Time



Click the button (S) for preset modes

This comes with three curing time settings: 5 min, 10 min, 20 min.

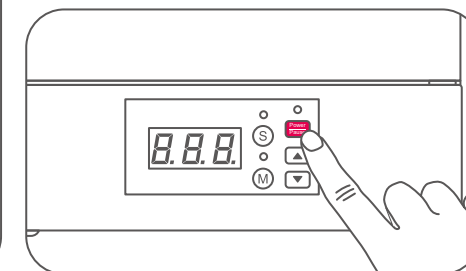
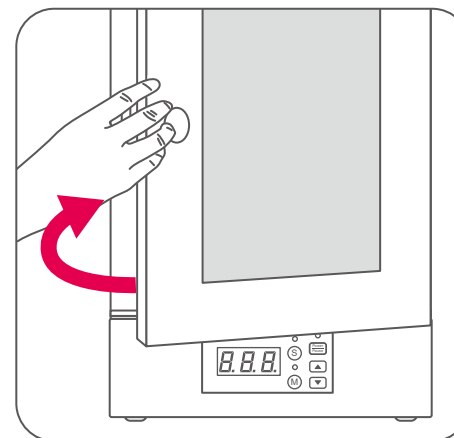


Click the button (M) for custom mode

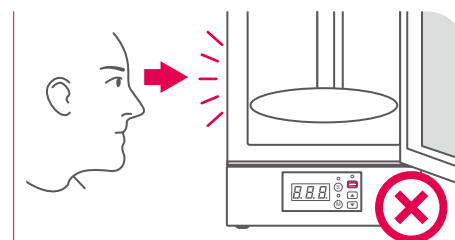
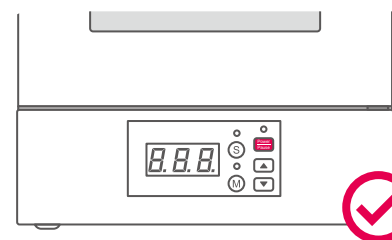
Click on the up and down keys to increase or decrease 1 minute each time. Long press the keys to quickly increase or decrease the minutes.

03 How to Operate the UV Curing Lamp

Close the UV lamp cover. Click on the Power button. The curing lamp will begin operation.



Warning



The UV lamp needs to be closed completely for the device to begin operation.

Do not stare at the UV curing lights without closing the UV lamp as this may cause damage to your eyes.

This appliance can be used by children aged 8 and above as well as by persons with reduced physical, sensory, or mental capabilities, if supervised or given instruction regarding the use of the appliance in a safe way, to ensure that the hazards involved are understood. Children are NOT allowed to play with the appliance.

Children are NOT allowed to clean or provide device maintenance without adult supervision.

The included power cord set packaged with the main unit cannot be used with electrical equipment other than the specified device.

Standard Maintenance Procedure

Please use sanitizing alcohol to clean the outside of your device. Do not use any oily or corrosive liquids to clean the device.



Facebook



Facebook Group



YouTube



Instagram

