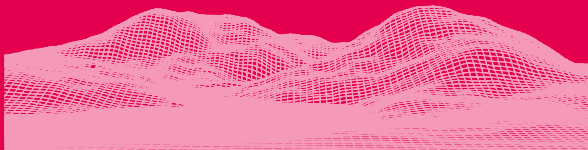


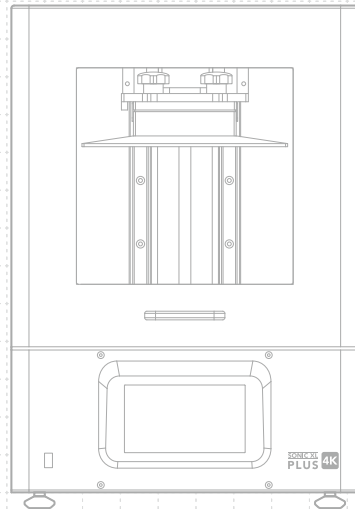


SONIC XL
PLUS 4K



Dear User,

Thank you for joining us. Please read through the entire manual and follow the step-by-step instructions provided to get the best printing experience.



01 Introduction

Printer Parts

PART.1
Building Plate

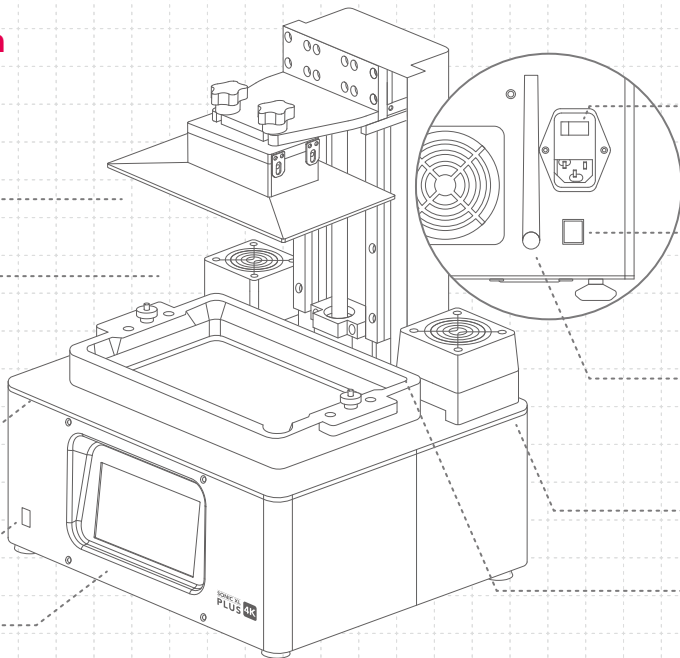
PART.2
Air Filtration System

PART.3
Resin Vat

PART.4
LCD Screen

PART.5
USB Port

PART.6
Touch Panel



PART.7
Power Switch
Power Socket

PART.8
Network Port

PART.9
Wi-Fi Antenna

PART.10
Heater

PART.11
Z-axis

The Toolbox



After Sales Service Card



Gloves



Power Connector



Plastic Funnel



Scrapers



Allen Wrench



USB



DS Slicer Dongle



Handle



Wi-Fi Antenna

Operation

System	Phrozen OS
Operation	5 inch Touch Panel
Slicer Software	Phrozen Dental Synergy Slicer
Connectivity	USB Ethernet Wi-Fi

Printing Specifications

Technology	Resin 3D Printer - LCD Type
Light Source	405nm ParaLED® 3.0 Module
XY Resolution	52 µm
Layer Thickness	0.01 - 0.30 mm
Max Printing Speed	Up to 90 mm / hr
Compatible File Format	.PRZ
Power Requirement	AC100-240V : 50-60Hz

Hardware Specifications

Printer Size	33 x 29 x 47 cm
Printing Volume	20 x 12.5 x 20 cm
Printer Weight	17.2 kg

* All specifications have been tested in a laboratory. Please note that certain specifications may be subject to change without prior notice.



PRINT



Z-AXIS



LCD TEST



HEATER



INFO



WIFI



UPDATE



LIGHT

PRINT

Choose your 3D file to begin printing.

Z-AXIS

Follow instructions on the manual to calibrate the Z-axis.

LCD TEST

Please follow instructions in the user manual to conduct the LCD test.

HEATER

To stabilize the temperature inside the printer chamber. Toggle the ON/OFF button to activate the heater function.

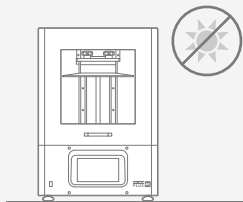
LIGHT

Manually adjust the LED light settings from 50% to 100%. The default value is the best performance.

Notice:

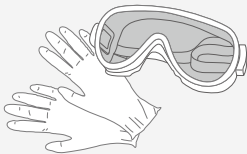
For first-time usage, please follow the user manual and conduct the following steps: Perform Z-axis Calibration, LCD Test, and Test Printing.

02 Key Notes Before Start



Stable Printing Environment

Store your 3D printer in a dry and ventilated environment. Avoid exposure to direct sunlight. Make sure to place the printer on a flat surface.



Protective Measures

While printing and using resin, please make sure to wear gloves, masks, protective goggles, and long-sleeved clothing.

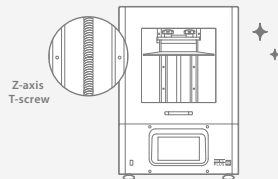
Maintenance

Clean the Z-axis

First, dry clean the Z-axis T-screw. Then apply a thin layer of general lubricant on it, so that it whirls smoothly.

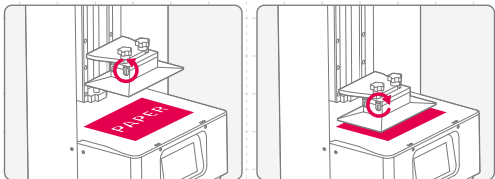
Clean the 3D Printer

Use sanitizing alcohol and tissue paper to carefully clean the printer, the resin vat, and the building plate.



03 Z-axis Calibration

- 1 Click on Z-AXIS. Then click on Z-axis Calibration.
- 2 Remove the resin vat and place a piece of paper on the LCD screen.
- 3 Install the building plate and loosen all 4 screws on the building plate.
- 4 Click on NEXT.
- 5 The building plate will then be lowered to touch the LCD screen.
- 6 Tighten all 4 screws on the building plate and click DONE.
- 7 Z-axis Calibration is now complete.



04 LCD Test

- 1 Click on LCD TEST.
- 2 There are three modes to choose from. Please test your LCD screen in the following order.
- 3 When all three modes are clearly displayed on the LCD, LCD TEST is completed.



LCD FILL UP

Confirm the LCD screen fully lights up and there are no black spots.



BLACKENED LCD SCREEN

Confirm the LCD screen covers all the light and there are no light spots.



LCD GRID

Confirm that the LCD screen displays the grid completely.

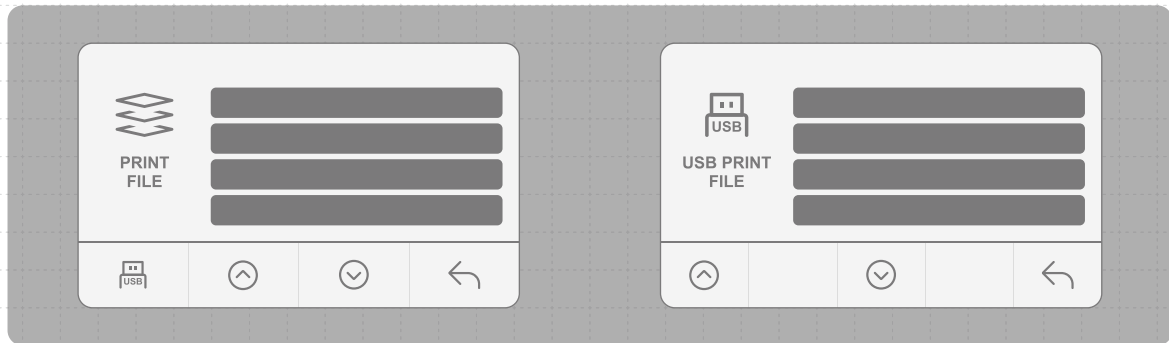
* *Please refer to the actual printer operation, based on the touchscreen display.

05 Import 3D Files

via USB

- 1 Plug in the USB drive into the 3D printer.
- 2 Using the touchscreen, follow these steps:

PRINT > USB icon > 3D file.PRZ > Wait for Upload

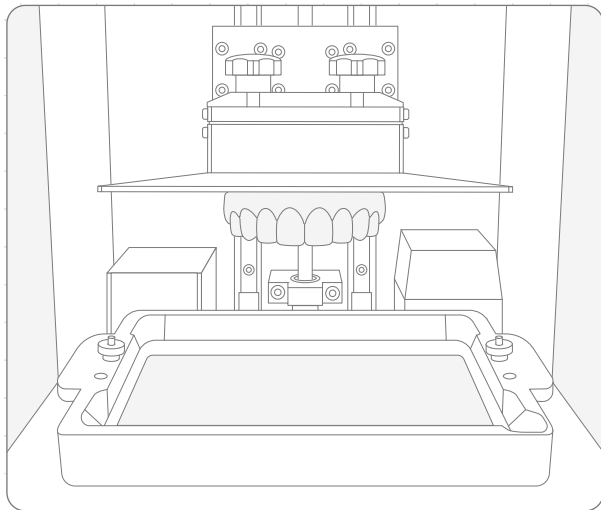


06 Perform Printing Test

Test Printing

After importing your files, we can now perform the printing test.

- 1** Install the building plate and resin vat. Make sure that both are parallel to the printer and its surface is clean.
- 2** Shake the resin bottle for 1 minute. When pouring, make sure the resin does not exceed the mark on the resin vat.
- 3** The building plate will go down once you initiate the printing process. After it reaches the bottom of the resin vat, the system will wait for 15 seconds before the printing begins.
- 4** After the printing process begins, the Air Filtration System will turn on automatically.
- 5** Keep the cover closed during printing to prevent excessive UV light.
- 6** Tilt and place the building plate onto a desk and use a metal scraper to carefully remove your print.



After-sales service & warranty

- Phrozen offers a one-year warranty for all parts, excluding consumable components such as the LCD screen and FEP film.
- Sonic XL 4K Plus screen is covered under a 3-month warranty. Please note that this warranty does not cover any damages caused by human factors.
- If you encounter any difficulties, please scan the QR codes down below to contact us.

Contact us!



Congratulations!

You have just completed your first run.
We hope you've had a great experience!

Please follow us on social media and subscribe
to our YouTube Channel to learn more printing
tips, share your creations with the community.



Facebook



Facebook Group



Instagram



**Phrozen Dental
Official Website**



YouTube